

KHAYRAT SHATT ALARAB COMPANY

General Contracts Ltd Co.



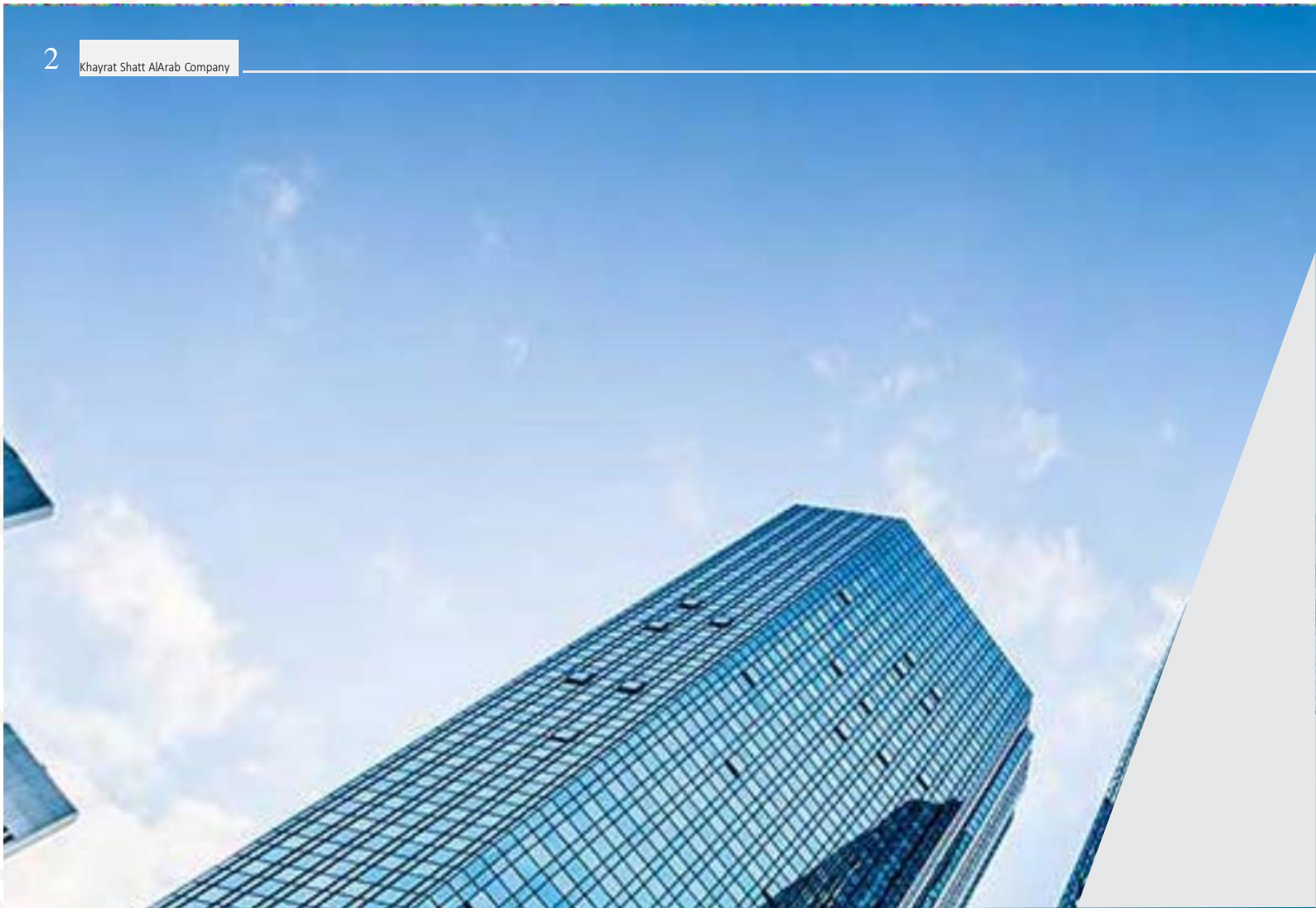
Khayrat Shatt Al Arab

PROFILE


Khayrat Shatt Al Arab Company aspires to be a foremost construction company, consistently adhering to the highest international quality standards to maintain a leading position in the industry

Address: Iraq-Basra-Albradhya-Seed Amen St.
Mob. +9647806440744 / +9647703230333
Mail: info@ksa-iq.com / khaiyratco@gmail.com





We appreciate your selection of us as your business partner. We are committed to earning your trust, and we believe that (KSA) is poised to be the ideal partner in our cherished Iraq



CONTENT

05 ----- ABOUT US

06 ----- CEO MESSAGE

08 ----- COMPANY'S POLICY

09 ----- CORPORATE ETHICS

10 ----- VISION & MISSION

12 ----- OUR TEAM

14 ----- EQUIPMENT & PLANTS

16 ----- WHAT WE DO?

18 ----- OIL & GAS SERVICES

20 ----- LOGISTICS SERVICES

22 ----- OUR STANDARDS SAFETY

We have the capability to
achieve success.

Every task is executed with a commitment to
delivering quality products accompanied by the
highest standards of technical assistance.



ABOUT

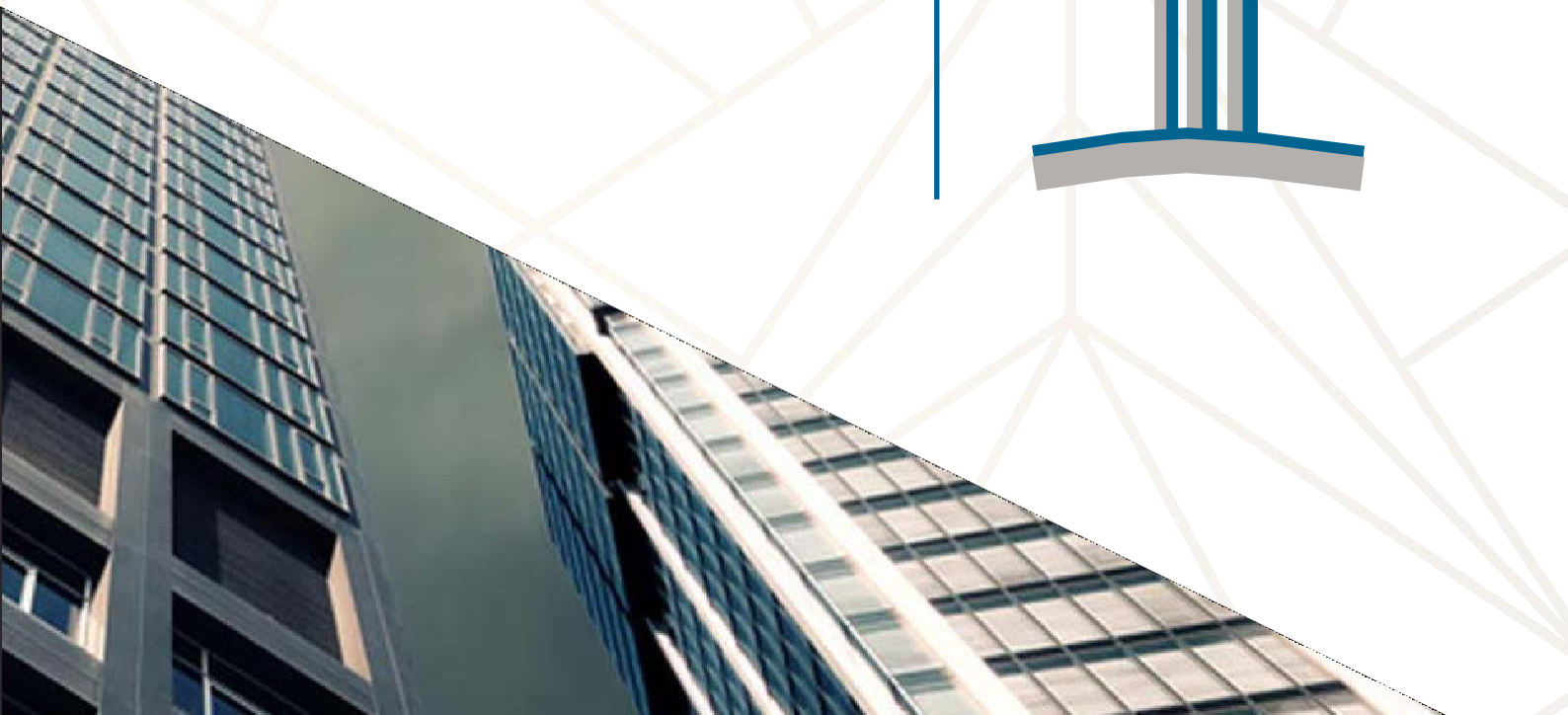
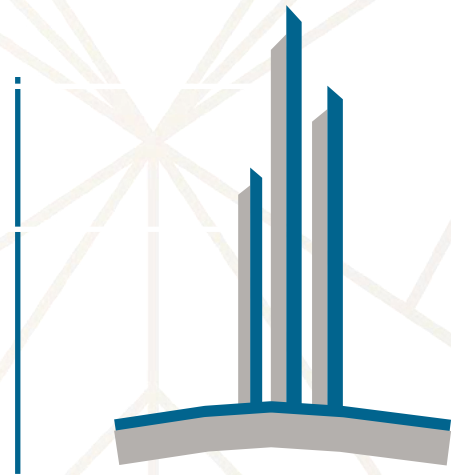
Khayrat Shatt Al Arab (KSA)

We are Khayrat Shatt Al Arab (KSA), based in Basra. From our inception, we have been dedicated to staying abreast of all developments in the construction and contracting industry, aiming to emerge as a leading and specialized contractor. Our goal is to offer comprehensive services to our clients and customers.

(KSA) proudly presents itself as a seasoned company with expertise in constructing administration, commercial, residential, industrial, and pre-engineered buildings. We also excel in bridge construction, as well as security and fire systems work.

Our team at (KSA) is well-equipped to undertake diverse projects, including residential, commercial, and administrative buildings, industrial and pre-engineered structures, tunnels and bridges, and electro-mechanical projects. Our qualified and multidisciplinary team of engineers, laborers, and support staff ensures the successful execution of all projects.

At (KSA), we attribute our success to the introduction of quality products and the highest standards of technical assistance in all our endeavors.



CEO MESSAGE





Brilliant Insights, Towards a Bright Future

Welcome to (KSA)_

We are a team of engineers boasting substantial experience in the management and execution of diverse engineering and construction projects. Our expertise is underscored by a stellar reputation in the construction sector, earned through collaborations with various international oil and construction companies.

Founded on the collective experience of our leaders and seasoned professionals, our company aspires to achieve new milestones and be recognized among esteemed firms. With your cooperation and support, we aim to transform our ambitions and aspirations into tangible realities. Our primary objective is to deliver outstanding engineering services marked by high-quality workmanship.

Our team members are strategically categorized based on their experience and responsibilities, commencing with the adept management of the company. These individuals possess extensive experience in overseeing business operations. Engineers within our ranks are specialized in concrete, insulation, painting, scaffolding, electrical and mechanical works. Quality control engineers, well-versed in the specific requirements of oil companies, play a crucial role. We also provide engineers for quantity calculations and pricing, facilitating monthly progress reports supported by all necessary drawings and accounts to substantiate the validity of advancement figures.

This organizational structure extends from competent and middle-level cadres to trained labor.

While we acknowledge that we may not match the financial and moral prowess of established local companies renowned for their good reputation, we are confident in our ability to compete with them on a technical level.

COMPANY'S POLICY

1. POLICY STATEMENT

In keeping with the Code of Business Ethics and Professional Conduct Policy, (KSA) operates with a zero-tolerance policy towards bribery or any other form of corruption in its practices.

Neither (KSA) , nor any employee, person or entity associated with (KSA) , shall offer, pay, promise, authorize or receive any bribes, other illicit payment or benefits to or from any person or entity with whom (KSA) conducts its business. This includes, but is not limited to government officials, clients, vendors, sub-contractors, suppliers, sub-consultants, partners, consultants or associates.

(KSA) 's Board of Directors and Executive Management will set the example in fostering a culture of compliance with respect to this policy.

2. PURPOSE

The purpose of this policy is to give very clear guidelines on what constitutes bribery, and to distinguish bribery from accepted business practices for the promotion of (KSA) .

3. SCOPE

This policy applies to all officers and employees, temporary employees, agents, sub-contractors or sub-consultants of (KSA) whether employed in the parent company, branch office, subsidiary, joint venture or any other entity to which (KSA) belongs or is engaged.

4. DEFINITION

Bribery: is committed when an inducement or reward

is offered, promised, provided, accepted or solicited to gain any commercial, contractual, regulatory or personal advantage for (KSA) , the employee or person or entity associated with (KSA) .

5. RESPONSIBILITY

The Board of Directors holds primary responsibility for implementing this policy and for reporting on its compliance to the Board of Directors. The Board of Directors nominates the Chief Executive Officer (CEO) to be the care-taker of this policy, who in turn has delegated the responsibilities of managing compliance with this policy to (KSA) 's Compliance Officer.

With the assistance of (KSA) 's Compliance Officer, all offices of (KSA) and its subsidiaries must establish appropriate mechanisms and procedures within their operations to prevent, detect, investigate and report any violations of (KSA) 's Anti-Corruption and Anti-Bribery Policy.

All employees throughout (KSA) , its branches, subsidiaries and joint ventures, are individually responsible to prevent, detect and report any violation of (KSA) 's Anti-Corruption and Anti-Bribery Policy and shall sign an Anti-Corruption and Anti-Bribery Undertaking and participate in regular Anti-Corruption and Anti-Bribery Compliance Training (as may be facilitated by (KSA) from time to time).

Suitable channels of communication will be maintained for employees to seek guidance and to report confidentially any suspicion of corruption. The appropriate communication process is in the first instance to report to VP / MD and HRM, secondly VPHR / GC and finally the CEO.



Corporate Ethics

As it aims to be a regional leader and one of the Iraq consultancy firms, (KSA) pledges to lead by example, maintaining and reinforcing a world class ethical practice and an unwavering culture of excellence.

We pride ourselves in our reputation and a scrupulous regard for high standards of personal conduct and integrity. (KSA) is built upon the principles of fair dealings and ethical conduct and we adhere to careful observation of all applicable laws and regulations.

Ethical conduct is fundamental to how we do business and reinforces our core values which shapes our culture and defines the character of the company. Ethics also guide how we behave and make decisions at all levels of the company: From the officers, directors, employees, representatives, and agents of (KSA) .

“Consistent with our core value of integrity, (KSA) acts in all things with honor and the highest standards of ethical, law-abiding and professional behavior and operates with a zero-tolerance towards bribery or any other form of corrupt practice.” Chief Executive Officer

Vision

Our vision serves as the framework for our Roadmap and guides every aspect of our business by describing what we need to accomplish in order to continue achieving sustainable, quality growth.

Mission

Our Roadmap starts with our mission, which is enduring. It declares our purpose as a company and serves as the standard against which we weigh our actions and decisions.

- To refresh our homeland...
 - To inspire moments of optimism and happiness...
 - To create value and make a difference.
-

Our values

We have five values that express our shared understanding of what we believe, how we aim to behave and what we aspire to be as an organisation

Safety

Safety is good business. Everything we do relies upon the safety of our workforce and the communities around us. We care about the safe management of the environment. We are committed to safely delivering energy to the world.

Respect

We respect the world in which we operate. It begins with compliance with laws and regulations. We hold ourselves to the highest ethical standards and behave in ways that earn the trust of others. We depend on the relationships we have and respect each other and those we work with. We value diversity of people and thought. We care about the consequences of our decisions, large and small, on those around us.

Excellence

We are in a hazardous business, and are committed to excellence through the systematic and disciplined management of our operations. We follow and uphold the rules and standards we set for our company. We commit to quality outcomes, have a thirst to learn, and to improve. If something is not right, we correct it.

Courage

What we do is rarely easy. Achieving the best outcomes often requires the courage to face difficulty, to speak up and stand by what we believe. We always strive to do the right thing. We explore new ways of thinking and are unafraid to ask for help. We are honest with ourselves, and actively seek feedback from others. We aim for an enduring legacy, despite the short term priorities of our world.

One Team

Whatever the strength of the individual, we will accomplish more together. We put the team ahead of our personal success and commit to building its capability. We trust each other to deliver on our respective obligations.





OUR TEAM

(KSA)'s Management Team is one of the main pillars of its success, continued growth and expansion.

Most of the members have been with the company for over years. Dedication, expertise, professionalism and commitment are the main drivers of the management policy.

Consistency, clarity and steadiness of purpose are cornerstones of our performance. We inspire through leadership the same principles to the new generation of staff joining the company.

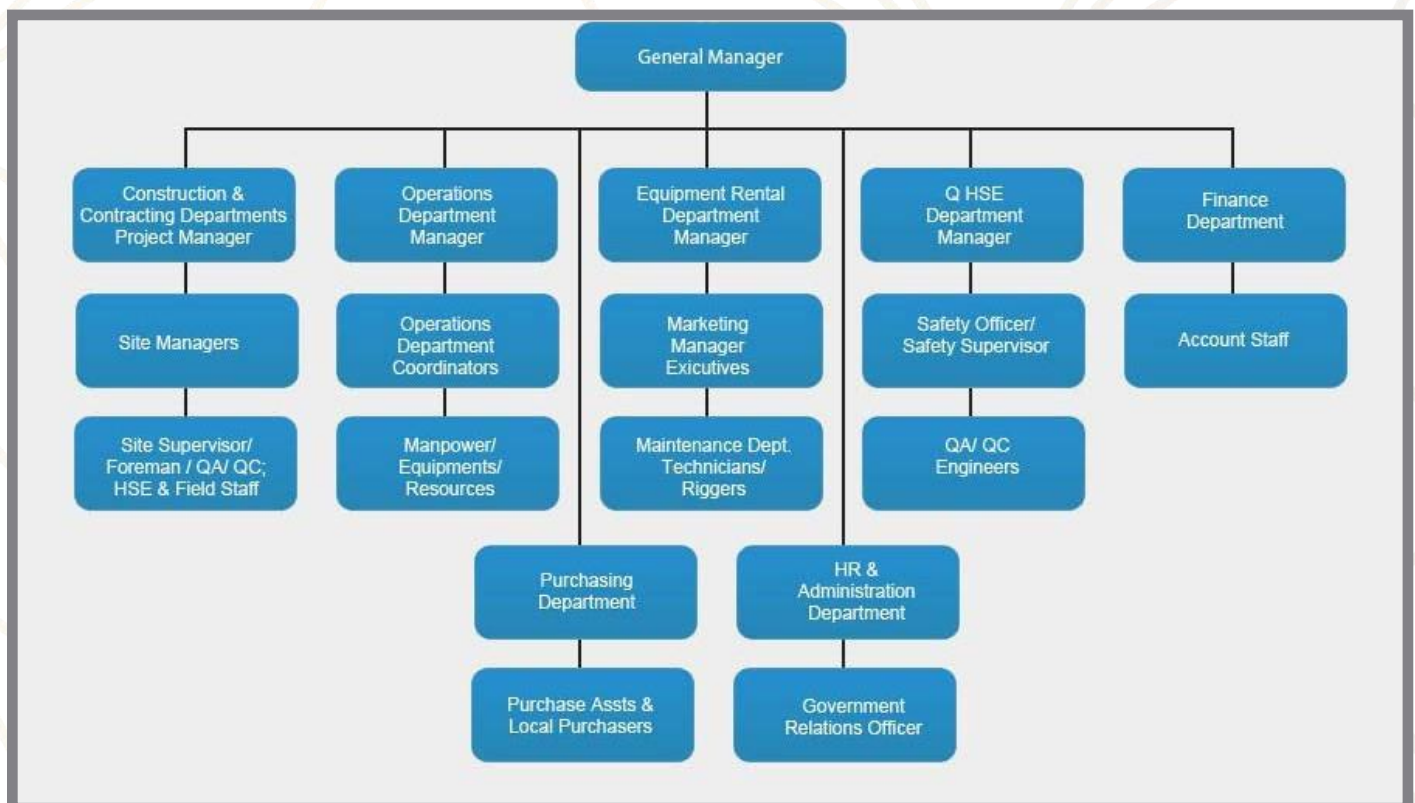
We will always seek to innovate, to upgrade our capabilities and to meet new challenges. Our mission is to treasure our rich heritage and transcend to new limits.

In the years to come, we will continue to carry the flag. Sky is our limit, and we are fueled by our culture of steady growth, quality work and commitment to time.



(KSA) has its own work forces to perform the majority of work. We have available sufficient heavy equipment to perform all utility and the site development work for the typical construction project. With respect to building construction, our own work forces have the ability to perform all earth work, concrete work, carpentry, drywall and other works, related to our services. Our team has also specialists in installation of specialty products, equipment and heavy machinery mechanics, as well as catering specialists. It is our philosophy that we are better able to manage the construction process, affect efficient construction costs and maintain and expedite the construction schedule by performing large portions of the work with our own equipment and personnel.

Khayrat Shatt Al Arab CHART



EQUIPMENT & PLANTS

(KSA) owns equipment fleet that has grown over the years to match the job requirements, available supplies and new work trends. The equipment fleet is a major asset and its growth has to be a judicious investment.



Our extensive experience, combined with today's practices, has led to determining the brands, models, sizes, and suppliers who will give the best results in terms of:

- Timely achievement of the projects
- Minimization of downtime
- Equipment efficiency
- Equipment durability
- Optimization of investment

Our Equipment Resources

Equipment : 100 Heavy Machinery
Including Vehicles

Plants: 1 Asphalt and Concrete Plants

Our equipment fleet comprises earthmoving equipment, concrete plants, mixers & pumps, asphalt plants and associated pavers & compacting equipment, power generators and mobile & tower cranes.

A Central Equipment Facility provides the means for carrying out major overhauls, in-depth repairs, modifications and manufacturing for equipment originating from or going to different projects.

All our sites are equipped with workshops commensurate with the number and nature of their equipment and project scope.

The standard practices that apply to all equipment comprise periodic and preventive maintenance, adjustments and repairs as needed.

In addition to the Central Equipment Facility, and in response to the concentration of equipment and/or any special operational needs, two Intermediate Maintenance Setups are located in Company workshops, to serve the areas' projects. These Intermediate Maintenance Setups are headed by engineers who direct and supervise all technical and administrative aspects of equipment maintenance.



WHAT WE DO?

(KSA) has provided our clients with effective construction based on our wealth of experience in building. (KSA) is well adept in all genres of construction from base building and commercial renovation to full scope tenant fit-out. Our professional capabilities encompass extensive multi-disciplinary work in mixed use developments, civil infrastructures improvements, public work facilities and commercial building construction.

CONSTRUCTION AND BUILDING WORKS



- Highways pavements with sides works.
- Designing buildings, bridges and construction.
- Rehabilitation internal and external roads and park areas.
- Constructing Reservoir and fabricating steel structures for industrial shed.
- Establishment and rehabilitation of the row and pure water pumping stations.
- Design and implementation of row and pure water networks.
- Design and implementation sewage water (heavy water) and raining water networks.
- Steel Structure and Building structures
- Equipment supports, skids, Platforms and stairways
- Digging Channels and wells.
- Warehouse Constructions, Caravan fabrications and installation.
- Supplying all necessary equipment and materials for construction (basis maintainers, diggers, cranes, cement factory.
- Establishment and rehabilitation sewage water pumping stations.
- Establishment and maintenance works of all types of buildings.
- Building and rehabilitation of schools, hospitals and all different types of structures.



- Gas Turbines, Turbo-Machinery / Rotating Equipment application (Power Generation), Instrumentation and controls,
- All the maneuvers of operation and ignition of switch gear LV-MV equipment switch board, Power Transformers, Protection relays, Cable routes in buildings and Lighting,
- Diesel engine operation, Maintenance and trouble shooting,
- Automation controls / Allen Bradley,
- Building Automation systems and Closed-circuit CCTV. systems.

(KSA) works in Water, Oil and Gas pipeline projects. The following services included all mechanical works related to installation and maintenance of machines are the major activities that Khayrat Shatt Al Arab can do in Piping Projects:

Roadway Crossing, River Crossing, Mobilization, ROW, Transportation, Handling, Hauling, Stringing of Pipes, Sleepers, Pipe Racks, Trenching, Crossing, lining up and Welding, , heavy and light equipment, pumps, installation of sewerage networks , cooling systems, installing generators, welding with all kinds and manufacturing Sewerage & Water Metallic molds, Radiographic Inspection, Testing and Commissioning.

A scaffold is a temporary structure erected to support access or working platforms.

Scaffolds are commonly used in construction work so workers have a safe, stable work platform when work cannot be done at ground level or on a finished floor.

Scaffolding in this Guide means the individual components, for example tubes, couplers or frames and materials that when assembled form a scaffold. Scaffolding is classified as plant under Work Health and Safety.

ELECTRICAL WORKS AND ENERGY SERVICES



MECHANICAL SERVICES



SCAFFOLDING



LOGISTICS SERVICES



(KSA) supply chain organizational networks provides our customers with global procurement and contracts services that are unsurpassed in the region.

Our logistic team have good professional knowledge of local laws, available markets, customs, shipping, and procurement practices. This enables us to efficiently source materials, equipment, and spare parts from different locations around the world in compliance with all local and international laws and regulations.

We support large, complex projects in remote locations of the country using both local and international suppliers from over 6 countries of the world. We have the right processes, automation tools, market data, volume, and skilled professionals to meet our project demands.

We ensure the responsible purchase and safe delivery of quality goods and services, from reliable and diverse suppliers and subcontractors, where they are needed, on time, and at the lowest total cost of ownership.





OUR STANDARDS SAFETY PROGRAMS

The Management of (KSA) is committed to the prevention of accidents, equipment and material damage, as well as the protection of health and environment by adhering to the following convictions:

- Wide-spread awareness of health, safety and environmental programs.
- The implementation of the “On- site safety rules and regulations” as defined and documented in our safety plan.
- Compliance with the safety regulations as stipulated in contracts.
- Reporting and documentation of any accident resulting in personal injury and/or damage to equipment and materials.
- Monthly reporting on total man-hours versus lost time accidents. A safety plan is prepared accordingly to ensure strict adherence to the contracts as well as fire & safety regulations.

QMS & QA-QC Plans

Implementing a Quality Management System (QMS) helps improve the way operations are run and enhances efficiency and profitability. Furthermore, it can help in overcoming market barriers.

The purpose of applying the Quality Management Procedure at (KSA) is to identify the responsibilities and to define the management’s innovative approach for improvement in the performance of all member companies of the Group.

The Quality Management System document addresses the requirement for Management Responsibility in accordance with (KSA) internal organization. This is prepared to ensure that the elements needed to monitor continuous improvement on the performance of the company’s Quality Management System are in place and applied at all our projects by staff members who are specialized in application and auditing.


ENVIRONMENT SAVE

Our Company quality objectives are to complete projects in accordance with the agreed program, specification and cost, to the highest standards of quality and efficiency whilst ensuring that statutory and regulatory requirements are complied with and client expectations are met.

Our Company is fully committed to the Quality Management System and its continued improvement, and has assigned responsibility in this regard to the Managing Personnel, whose duties include ensuring that Management Review meetings are held at regular intervals to review the system's effective operation and development.

The Company's Quality Management System conforms to the requirements of ISO. It is subject to regular examination and assessment by an independent certification authority, which ensures a process of constant evaluation and improvement. Our Company also conforms to Environment Management System (ISO) and Health & Safety Management System (OHSAS). This benefits our Clients and how we conduct our business, while enhancing the standing of Our Company in the construction industry.

Ensuring the safety of every employee — Our Company first duty is to ensure the occupational health and safety of its employees. Company's objective is to achieve zero accidents at our worksites and corporate sites. This objective applies to Our Company employees, temporary employees and subcontractor employees alike. Safety training is provided to all company employees, which help to ensure



that every employee becomes actively involved in preventing accidents in his or her day-to-day behavior. Management at all levels is closely involved in overseeing, implementing and monitoring safety policies.

Ensuring equal opportunities for all

Our Company upholds the principle of prohibiting discrimination on any grounds in hiring and labour relations. Human resource administration and, more broadly, employee relations are based on the principles of mutual trust and respect to ensure that everyone is treated with dignity. Above and beyond their role in fostering upward mobility, Our Company apply a proactive equal opportunities management policy focused in particular on gender equality and employment of the disabled, people of immigrant background and seniors.

Reducing the impact of our activities

— In both construction and operation activities, Our Company strives to meet the highest environmental standards with respect to conservation of natural resources, energy consumption, waste management and biodiversity protection. The deployment of environmental management systems to supplement quality management systems promotes continuous development in this area.

KSA previous implemented projects

1. Construction of three stores (1500 m2) to South Gas Company in cooperation with the Office of Scientific Consultations and Chemical Construction Basra University.
 2. Rehabilitation of cooling tower in South Refineries Company in cooperation with the consulting office of the College of Science / University of Basra .
 3. Extension of oil pipe from Bazerkan to Abu Gharb for the South Oil Company in cooperation with the Office of Scientific Consulting and Chemical Construction / University of Basra.
 4. Extending of oil pipe for Fakka well / 8 for the South Oil Company in cooperation with the Office of Scientific Consulting and Chemical Construction / University of Basra.
 5. Supplying of industrial chemicals for General Company for Fertilizer Industry.
 6. Manufacturing of chemical tank for South Gas Company.
 7. Rehabilitation Implementation of Al Jazaer Street with Al-Mostaf General Contracting Company.
 8. Demolition and reconstruction of Al-Ahd Al-Zaher School.
 9. Demolition and reconstruction of Al Sadeer School.
 10. Supplying and a residential complex (caravans) in northern Rumaila for South Oil Company with Raban Al Safina Contracting Company.
 11. Installation of chemical injection system in Majnoon complex
 12. Chemical washing Works of turbine system number / 8 for the South Gas Company.
 13. Work of wrapping of pipe 24 “ along 8 km in Majnoon field for SOC.
 14. Lining of three 57 m3 acid tanks with synthetic rubber for SOC.
 15. Demolition and reconstruction of Al Eman School /18 class in Khamsimil / Basra.
 16. Implementation of the infrastructure project for the University of Basra / various buildings.
 17. Supplying of Toyota Land Cruiser cars to BOC.
 18. Demolition and reconstruction of School /18 class & Three floors in Al Mutiaha / Basra.
-